

# PRICE LIST

1-2

Find price in your own currency

<https://www.xe.com/currencyconverter/>

2 red smilies ●● means "in stock"

1 red smiley ● means "some pitches/items in stock"

FMS No.	Price EUR €
21AA ●●	195
21A ●●	159
21B ●●	159
21C ●●	169
21D ●●	175
21xx	External Inserts to customer specification. Price on request
22AA ●●	215
22A ●●	179
22B ●●	205
22C ●●	234
22xx	Internal Inserts to customer specification. Price on request
23AA ●●	145
23A ●●	135
23B ●●	135
23C ●●	145
23D ●●	149
23xx	Internal Inserts to customer specification. Price on request
24A ●●	230
25A ●●	215
26 ●	190
27 ●	245
28 ●	160
30A ●●	230
30AB ●●	285
30mm/TPI ●	Calibration plate for Tr or ACME thread. Specific pitch. 275
30xx	Calibration plate to customer specification. Price on request
<b>BUTTRESS THREADS ▼</b>	
B21 ●	External Inserts to customer specification. Price on request
B22 ●	Internal Inserts to customer specification. Price on request
B23 ●	Internal Inserts to customer specification. Price on request
B30 ●	Calibration plate to customer specification. Price on request

FMS No.	Price EUR €
10A ●●	87
11A ●●	91
40A ●●	25
A40 ●●	25
50A ●●	19
55A ●●	49
<b>RECESS INSERTS</b>	
60A ●●	115
61A ●●	155
61B ●●	180
61C ●●	115
601xx	Inserts to customer specification. Price on request
99A ●●	15
99B ●●	8
MT203 (+ 99A) ●●	199
DIGITAL CALIPER ●	PRICE ON REQUEST
<b>Certified Calibration Certificates</b>	
For 30A	170
For 30AB	210
For others	220

**Delivery:** For items in stock delivery is normally the work day after an order or payment has been received.

For items not in stock manufacturing time can be up to 3 work weeks.

For customers, most thread questions re thread type and tolerances are answered free of charge.

<https://flexiblemeasuring.com/>

<b>Thread Inserts</b>	
Types 21, 22 & 23 for threads with a flank angle between 55° to 80°	
60° M, MF, UNC, UNF, UNEF, UNS, 55° Whitworth, G (BSP) & 80° Pg,	
No.	Scope of Pitch
21AA	External 0.5mm-1mm/48-24 TPI
21A	External 1mm-2mm/24-13 TPI
21B	External 2mm-4mm/13-6 TPI
21C	External 4mm-8mm/6-3 TPI
21D	External 6mm-12mm/3-2 TPI
22AA	Internal 0.5mm-1mm/48-24 TPI
22A	Internal 1mm-2mm/24-13 TPI
22B	Internal 2mm-4mm/13-6 TPI
22C	Internal 4mm-8mm/6-3 TPI
23AA	Internal 0.5mm-1mm/48-24 TPI
23A	Internal 1mm-2mm/24-13 TPI
23B	Internal 2mm-4mm/13-6 TPI
23C	Internal 4mm-8mm/6-3 TPI
23D	Internal 6mm-12mm/3-2 TPI
For tapered threads types R, Rc & NPT	
24A	External & pitches 19-8 TPI
25A	Internal & pitches 19-8 TPI
For thread types Tr & ACME	
26	External & pitch specific
27	Internal & pitch specific
28	Internal & pitch specific
Buttress type threads	
B26	External & pitch specific
B27	Internal & pitch specific
B28	Internal & pitch specific

<b>Calibration Plates</b>	
30A	For thread inserts 21, 22, 23, 24 & 25 Pitch scope 1-4mm / 24-6 TPI
30AB	For thread inserts 21, 22, 23, 24 & 25 Pitch scope 0.5-8mm / 48-3 TPI
Other types of calibration plates are made for specific thread types and pitches.	

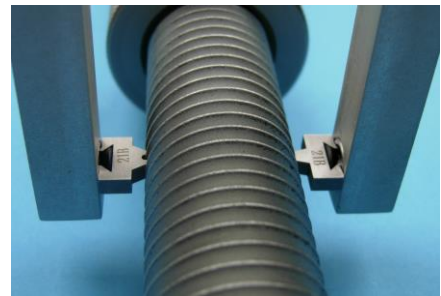
Calibration plates can be delivered with a certified Calibration Certificate from a Danish calibration laboratory.

Recertification of calibration plates is considered unnecessary as wear is virtually not a factor normally needing to be taken into considered.

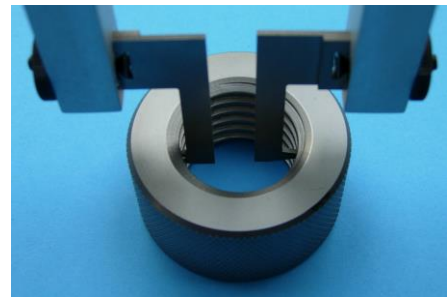
<b>FMS Accessories</b>	
10A	Insert holders for calipers with a jaw thickness up to 4mm
11A	Insert holders for calipers with a jaw thickness up to 6.5mm
40A	Caliper pressure device
A40	Caliper pressure device
50A	Inserts for M2.5 probes
55A	Centerstop for measuring long threads or many "identical" threads

<b>Recess &amp; Groove Inserts</b>	
60A	For external recesses with minimum recess width of 1mm and depth of 10mm
61A	For internal recesses in a minimum diameter hole of 5mm and recess width of 1mm and depth of 5mm
61B	For internal recesses in a minimum diameter hole of 10mm and recess width of 1mm and depth of 10mm
61C	For external recesses with minimum recess width of 1mm and depth of 10mm

<b>Aluminium Boxes</b>	
99A	For digital calipers up to 200mm / 8" (including FMS caliper MY203) and cavities for inserts and calibration plate.
99B	For FMS inserts and items.



Pitch diameter measurement  
External ▲ & Internal ▼



FMS special caliper