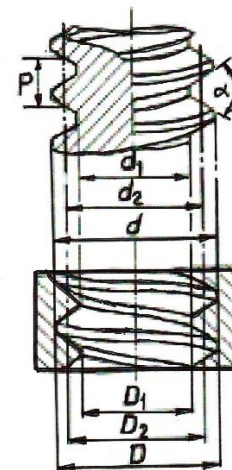


<b>Thread Measurement Inserts</b>	
FMS No.	Information
Thread inserts types 21, 22 & 23 are for threads with a 55° - 80° flank angle. Typical threads within this range are M, MF, UNC, UNF, UNEF, UNS, UNJ. G (BSPP), NPS & Pg	
External Pitch Diameter (d1)	
<b>21AA</b> €195	For pitches between 0.5-1 mm/48-24 TPI
<b>21A</b> €159	For pitches between 1-2 mm/24-13 TPI
<b>21B</b> €159	For pitches between 2-4 mm/13-6 TPI
<b>21C</b> €169	For pitches between 2-4 mm/6-3 TPI
<b>21D</b> €175	For pitches between 4-8 mm/3-2 TPI
<b>21X</b> From €175	Made to customer specification
Internal Pitch Diameter from 6mm/0.25" (D2)	
<b>22AA</b> €215	For pitches between 0.5-1 mm/48-24 TPI
<b>22A</b> €179	For pitches between 1-2 mm/24-13 TPI
<b>22B</b> €205	For pitches between 2-4 mm/13-6 TPI
<b>22C</b> €234	For pitches between 2-4 mm/6-3 TPI
<b>22X</b> From €234	Made to customer specification
Internal Pitch Diameter from 36mm/1.375" (D2)	
<b>23AA</b> €145	For pitches between 0.5-1 mm/48-24 TPI
<b>23A</b> €135	For pitches between 1-2 mm/24-13 TPI
<b>23B</b> €135	For pitches between 2-4 mm/13-6 TPI
<b>23C</b> €145	For pitches between 2-4 mm/6-3 TPI
<b>23D</b> €149	For pitches between 4-8 mm/3-2 TPI
<b>23X</b> From €149	Made to customer specification
Because of the flank angle (Tr 30° and ASME 29°) these require a FMS insert for each specific pitch.	
<b>26</b> €190	For Tr and ASME external pitch diameter
<b>27</b> €245	For Tr and ASME internal pitch diameter from 6mm/0.25"
<b>28</b> €160	For Tr and ASME internal pitch diameter from 36mm/1.375"
<b>26S</b> From €190	For Rd (Knuckle), Buttress & API external pitch diameter
<b>27S</b> From €245	For Rd (Knuckle), Buttress & API internal pitch diameter from 6mm/0.25"
<b>28S</b> From €160	For Rd (Knuckle), Buttress & API internal pitch diameter from 36mm/1.375"

<b>Thread inserts for R, Rc (BSPT) &amp; NPT</b>	
<b>24A</b> €230	For external taper threads from 1/8" and over.
<b>25A</b> €215	For internal taper threads from 1/8" and over.
Insert types 24A & 25A require calibration plate 30A	
<b>Calibration Plate</b>	
<b>30A</b> €230	For thread insert types 21, 22 & 23 with pitches from 1-4mm/6 TPI
<b>30AB</b> €285	For thread insert types 21, 22 & 23 with pitches from 0.5-8 mm/48-3TPI
<b>34</b> From €275	For thread inserts intended for threads with flank angles not between 55° to 80°
<b>Calibration Certificates</b>	
Certificates (where these are required) are carried out by a certified calibration lab.	
FMS calibration plates do not normally require recertification as there is virtually no wear from calibration. Probably the only time necessary is if the plate is dropped or mishandled.	

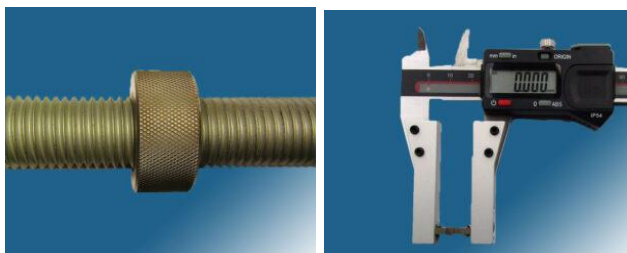
Measuring internal threads requires a reference. A calibration plate is such a reference and almost always give a measurement accuracy of ± 0.01mm/0.0005"



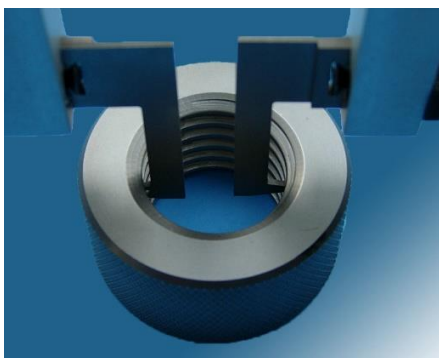
**ADVANTAGES WHEN USING FMS**

Know where you are within the tolerance.  
Measure at the machine and when setting up.  
The only limit to measurable diameter is caliper length.  
With FMS thread inserts 1 pair of inserts with numbers 21, 22 and 23 can replace at least 4 sets of thread wires or balls.

Caliper Accessories	
FMS Insert Holders	
<b>10A</b> €87	Insert holders for calipers with a jaw thickness of max. 4mm/0.155"
<b>11A</b> €91	Insert holders for calipers with a jaw thickness of max. 6.5mm/0.155"
<b>11S</b> From €95	Insert holders made to customer requirement
Caliper pressure devices	
<b>A40</b> €25	Caliper pressure device for calipers up to 200mm/8"
<b>B40</b> €60	Caliper pressure device for calipers up to 600mm/24"
<b>40S</b> From €60	Caliper pressure device made to customer requirements
Bushes for M2.5 dial probes	
<b>50A</b> €20	Dial probes can be used for external and internal measurement including wall thickness.
Center Stop	
<b>55A</b> €45	Useful when measuring many external threads with the same diameter.



d2 (external pitch diameter)



D2 (internal pitch diameter)



MT203

Special FMS Digital Caliper	
<b>MT203</b> €175	With built-in insert holders and 2-way pressure device.

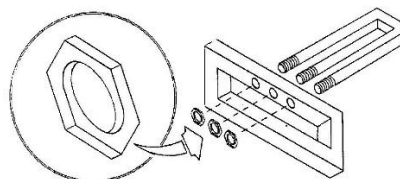


DC200

200mm/8" Digital Caliper with 2-way pressure device	
<b>DC200</b> €150	More accurate than standard calipers. Up to 200mm/8" specified accuracy 0.02mm/0.001"

Recess & Groove inserts	
<b>60A</b> €115	For external recesses & grooves
<b>61A</b> €155	For internal recesses & grooves. Min. hole diameter 5mm/0.2" and measurement depth of max. 15mm/0.6"
<b>61B</b> €180	For internal recesses & grooves. Min. hole diameter 10mm/0.4" and measurement depth of max. 30mm/1.2"
<b>61C</b> €115	For internal recesses & grooves and measurement depth of max.
<b>601X</b> From €120	Made to customer requirements. Best to send a drawing or sketch of what is to be measured.

As a customer all reasonable practical thread question re type and tolerances will be answered free of charge if possible.



If this is what you want we are not the company to ask.