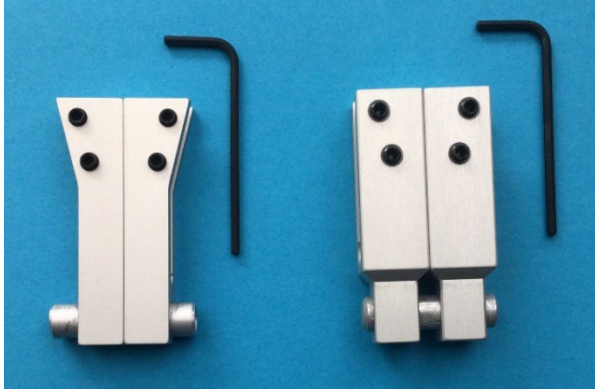


# FMS CALIPER ACCESSORIES

## INSERT HOLDERS

Insert holders 10A are for digital calipers with a jaw thickness up to 4mm / 0.157".

Insert holders 11A are for digital calipers with a jaw thickness up to 6.5mm / 0.256".



**10A**

**11A**

FMS insert holders can be made for all lengths and most types of digital calipers. Longer insert holders are usually necessary for measuring large diameter external threads.



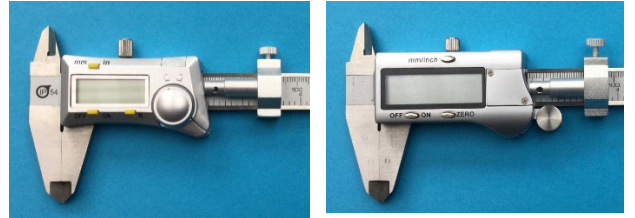
Insert holders type 10A mounted on a 150mm / 6" digital caliper. It is recommended that insert holders be used with a FMS pressure device.

## FMS CALIPER PRESSURE DEVICE A40 & B40

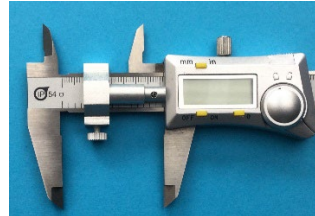


Possibly the largest deviation factor (with measurement accuracy) when using digital calipers is the varying measurement force used by each user. This device eliminates that factor.

As with insert holders these can be made for all caliper lengths. The larger (longer) the caliper the more force is required to move the sliding jaw so, other than type A40, these are supplied with 2 stronger and exchangeable springs. 17N and 32N. These are type B40 and can be used with digital calipers up to 1,000mm / 40". Gives the sometimes necessary "third hand".



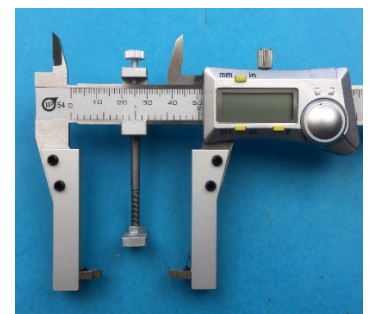
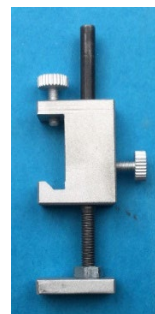
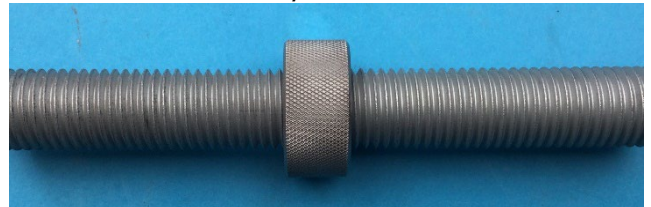
Fits both calipers with and without thumb rollers for external measurement.



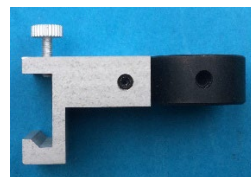
Type A40 mounted for internal measurement. The hole in the cylinder ensures repeatable constant pressure.

## CENTER STOP (55A)

Useful when measuring pitch diameter on long threads or many "identical" threads.



## CALIPER HOLDER (56A)



For holding a caliper at the machine or inspection table.

